

INTERIOR+DESIGN

Interiors

Hugge-style apartment in New York designed by David Scott



Lighting designer Natban Orsman helped find a pair of Pelle chandeliers. Bertha Schaefer's coffee table, approx. 1950 from Hostler Burrows. Carpet by Doris Leslie Blau. Above the fireplace by Marco Rodriguez in corrugated copper.

The apartment is 320 sq. meters designed by **David Scott Interiors** amazes with a collection of rare personalized items. The client was precise in identifying preferences - he wanted to highlight the Danish concept of "hygge" - simplified comfort, coziness, tranquility and satisfaction, expressed through collectible design items. David Scott had to combine the Scandinavian aesthetics in its post-war version with modern elements.

RELATED: Hospitable Home by Designer David Scott

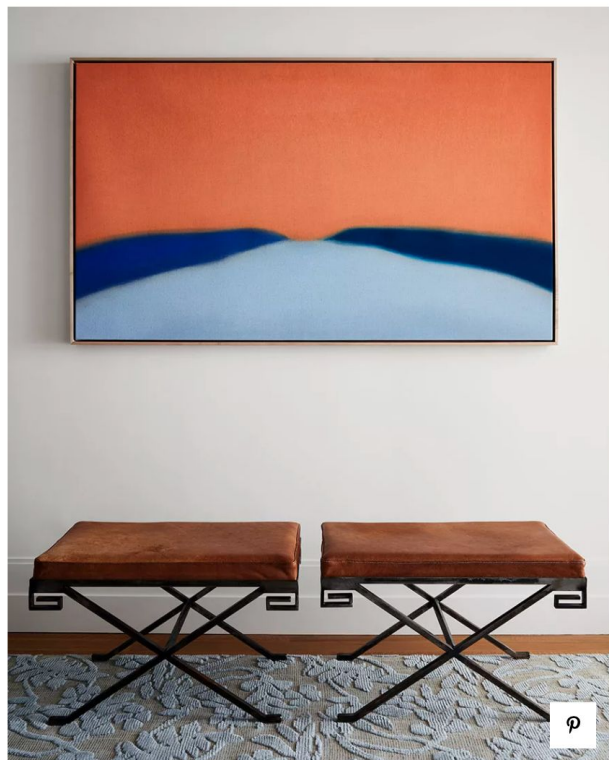
"We wanted to put together a collection of original Scandinavian furniture and blend it with a layer of contemporary art to create a timeless look. The idea of "crafting" was at the head of all decisions. For example, we offered rugs from Doris Leslie Blau, a renowned New York-based dealer of antique and vintage rugs, or hand-woven upholstery from France. Everything, down to the natural linen for the lampshades, has been carefully thought out in the context of the 'craft'.



Fragment of the bedroom.



Dining table in the style of Charlotte Perriand made to order. Painting by Larry Poon Untitled (18A-4), 2018.



Jean-Michel Frank leather stools. Painting by Susan Vexi.



White oak lamp, designed by Joe Prokario, Todd Merrill Studio Gallery.



High cabinet by Otto Schulz, Sweden, approx. 1930s from the Bac gallery.

The building stands in Midtown East, Manhattan. This is a residential area within walking distance of Park Avenue shops and Central Park walkways. It was very important that the interior seemed casual, spontaneously created, unlike ordinary apartments in skyscrapers. "

The apartment consists of a combined living-dining room, kitchen / breakfast room, entrance hall, master and guest bedrooms, study, home theater, 4 bathrooms and laundry room. The kitchen is equipped with a central high island with a counter. The adjoining breakfast area boasts spectacular river views and comfortable reading chairs. A beautiful table in the dining room is used to display ceramics and art books. The entrance hall is a kind of home gallery, where works of art are hung.



There is a dining area next to the kitchen. Custom bench, vintage Onkel Adam armchair and ottoman, designed by Kerstin Horlin-Holmquist. Painting by Jennifer Hornyak. Lamp PH Artichoke, Poul Henningsen, Louis Poulsen.



Master bedroom. Armchair, design by Otto Schulz, upholstered by Rogers & Goffigon. William Hinn's bedside table, Sweden, 1950s. Bedside table Lamps by Ewald Dalskog, Sweden, 1930s.

David Scott pays attention to every detail in the project he creates. The result is striking, not typical for American interiors, sophistication and European sensuality. "We worked closely with the client to put together a contemporary collection with an emphasis on women's art and design from the post-war years. The carpets and fabrics used throughout are vibrant in texture but subdued in color.

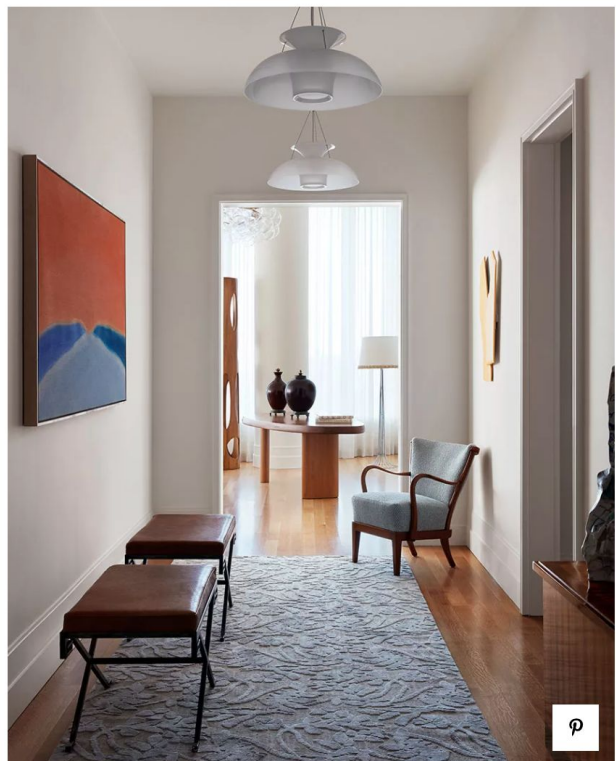
We were particularly interested in striking a visual balance: we had to think in a holistic way and match items to the artists' work. The key things got the role of stylistic accent, creating the image of the room, while other works, more lyrical and contemplative, were added. "



Custom upholstered sofa by Sam Kasten. Contemporary brass coffee table by contemporary Chinese author Zipen Tana. Side table, Josef Frank, Sweden, approx. 1950. It has a table lamp by Jean Besnard, France, 1930s from the Bac gallery.



Brass floor lamp, design by Hans Bergström. Armchair with headrest Borge Morgensen, Denmark, approx. 1960s. Blue armchair, design by Bjorn Tragard.



In the entrance gallery there are leather stools by Jean-Michel Frank. Painting by Susan Vexi. Hostler Burrows armchair. Silk rug by Doris Leslie Blau.



Kitchen. Walnut panels with horizontal texture. White quartz glass worktops and backsplash. Walcott stools from KGBL.



Cabinet. Vintage writing desk, designed by Nunn and Jorgen Dietzel, Denmark. It features a vintage Verre Lumiere Studio lamp. On the wall is the work of Esteban Vicente.



Scandinavian vintage teak cabinet and bedside tables in wood and concrete.



Tapestry Lillian Holm, Sweden, c. 1945.



Guest bedroom. On the floor is a vintage Swedish kilim. Painting by Amy Kirshner. Ceiling lamp from Trans-Luxe.



A molded glass mirror is adjacent to a vintage chandelier by Emil Steinar for Nikoll, Austria, ca. 1955.



Main bathroom. The sculptural bathtub was designed by Daniel Romualdes. The walls and floors are faced with polished white nano glass. Vintage Swedish carpet. Vintage carved teak armchair by Hans Wegner. Pendant lights designed by Alison Bergerem.



Common living-dining area.