

INTERIOR+DESIGN

Interiors

David Scott Interiors: family apartment in Manhattan



An apartment designed by David Scott of David Scott Interiors, with a beautiful view of the Empire State Building in Manhattan, looks like a symphony. Neutral hues create a relaxing respite from the hustle and bustle of the city, while accents of chartreuse and blue grab attention and balance the space.

RELATED: [The Hospitable Home of Designer David Scott](#)

"Neutral hues are accentuated by gold, greens, and blues," says David Scott. Materials—linen, wool, cotton, and mohair are from Holly Hunt, Loro Piana, and Romo and Kravet. All of them are chosen to highlight the decor in the family home. The furniture is a mix of new and made-to-order—like the wool and silk rug in the living room



Living room. Caspian sofa, Holly Hunt with Rogers & Goffigon upholstery. Tall Kvat Cabinet, Robert Kuo. Joseph Carini Carpets. Armchairs by Marco Zanuso, 1951. Gilded iron two-tier side table purchased at 1stDibs. Ottomans Borneo, Walker Zabriskie Furniture



The view from the window is emphasized by the interior setting.



Dining area. Rack New Day Woodwork. Distinctive Windows curtains. Lindsay Eidelman chandelier and table, BDDW. Chairs by the A Rudin table, upholstered by Holly Hunt. Accessories from BK Antiques, Balsamo and Flair



The kitchen is finished in white marble.



The kitchen area is built next to the dining room.

The "special moment" in this home is the light. The lighting throughout the apartment is an eclectic collection of fixtures, both new and vintage, that reflect the style of our clients as well as the Flatiron area of Manhattan. It was important to capture and combine classic design with modern, and linearity with organics to achieve that special New York energy that goes hand in hand with typical skyline views.

The custom built fittings are complemented by the iconic Serge Mouille sconces that counterbalance Lindsey Adelman's custom chandelier. Above the primary bedroom is the legendary Sputnik chandelier, made in Italy in the 1960s.



Fragment of the master bedroom.



A corridor connects the bedrooms with the living room.



Master bedroom. Armchair Studio Van Den Akker. Upholstery: Holly Hunt alpaca. Floor lamp Clarkson, Aerin.

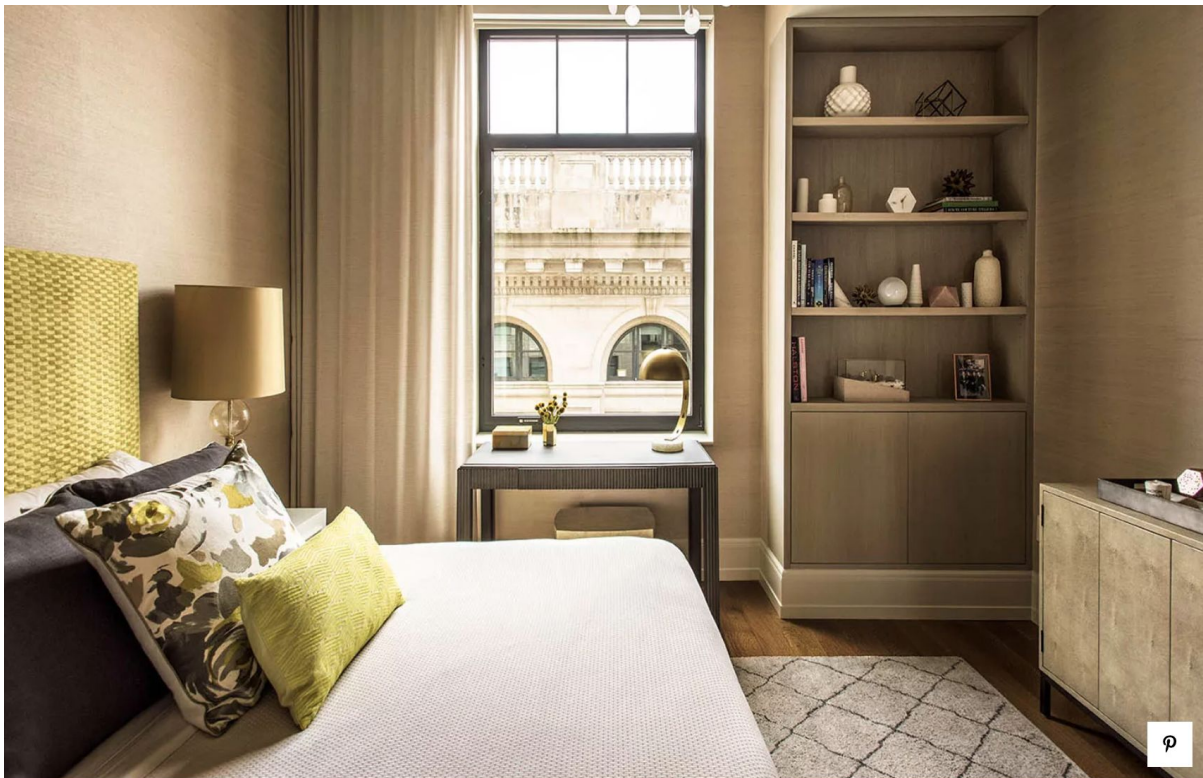
In the kid's room, the same eclectic feeling can be found– but with a more youthful and feminine touch. The Heracleum chandelier by Moooi branches gracefully around the room and is complemented by more massive lamps, handcrafted from brass, marble, and blown glass.



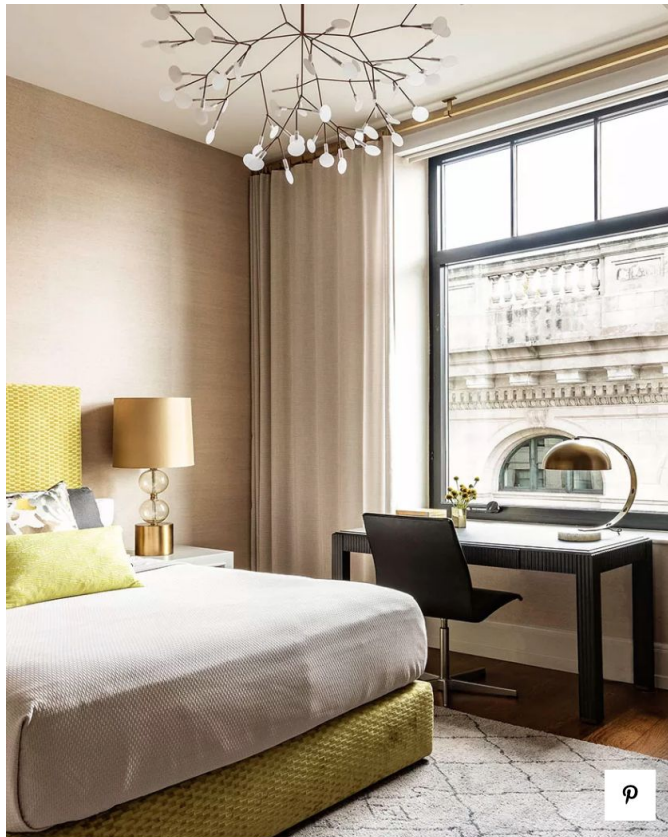
Master bedroom. Custom king size bed, NY Upholstery, Teskyl Kravet. Pedestals from Ruby Beets. Table lamp Starburst, Barneys and Fortuny.



A guest room.



Daughter's bedroom. Lamp Heradum, Marcel Wanders, Bertjan Pot, Moooi. Custom Sofi NY Upholstery Bed; Jerry Pair textiles. Sobo Treasures bedside tables. Table Lamp Mirimar, Arteriors. Bridgeton Table, Century Furniture. Wallpaper, Philip Jeffries for Holly Hunt ..



Daughter's bedroom. Lamp Heraclum, Marcel Wanders, Bertjan Pot, Moooi. Custom Soft NY Upholstery Bed; Jerry Pair textiles. Sobo Treasures bedside tables. Table lamp Mirimar, Arteriors. Bridgeton Table, Century Furniture. Wallpaper Philip Jeffries for Holly Hunt.



Powder room. Wallpaper Swirls, Harbinger. Oval goatskin lacquered mirror, Aldo Tura, Jon Howell Antiques.

Author: **Danila Varennikov**
Photo: **Gianni franchellucci**